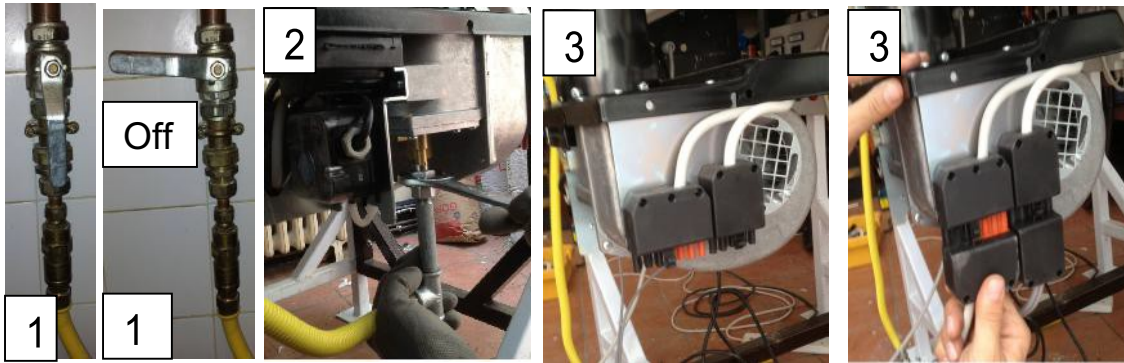
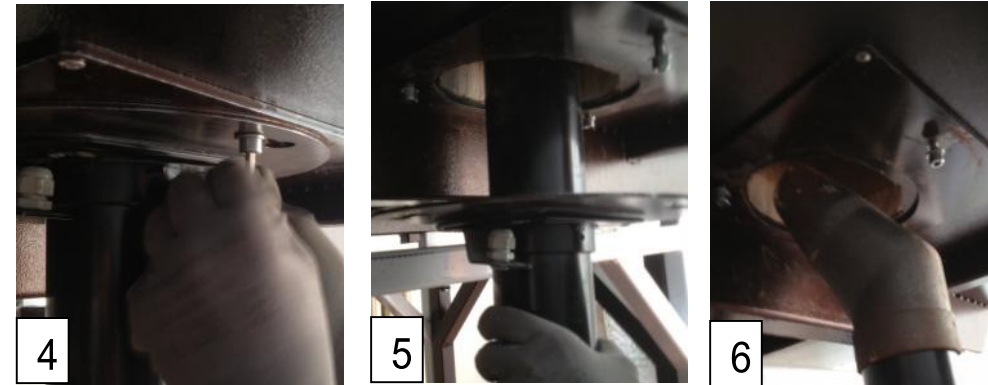


EXTRA – ORDINARY CLEANING



Close the gas safety valve. **1**
 Disconnect the gas pipe from the valve group to the burner body. **2**
 Disconnect the multipolar connectors of the control panel and the valve group to the burner. **3**



Unlock the **3** flange screw and **4** turn the burner 15 degrees following the hole. **5** Remove the burner with the flange inserted through the hole. **6**



To remove the fun unscrew the two screws supporting the connectors. **7**
 Unscrew the two screws of the grille. **8**
 Unscrew the four protection screws of the fun and remove the cover. **9**
 Use the compressor to remove any residues.



Remove the mouthpiece. **10**
 Unscrew the 4 screws of the pipe and carefully remove it. **11**
 Use the compressor to remove any residues. Check the electrodes and their correct position. **12**
 Note: the different colors of the wires: ignition -red; white detection. **12**



12 natural

12

12 gpl